

#Multininclude strategies to improve learning environments

Based on the Multininclude analysis of over 70 cases of inclusive education from all over the world, the following recommendations are important to keep in mind when developing programs to enhance success in education. The following steps are interrelated and complementary variables that together develop strategies for improvement.

Preconditions for successful development of inclusion practices in education:

Make sure there is commitment

Impact of initiatives is dependent on the levels of intention, motivation, communication and collaborations between different stakeholders in the educational pipeline.

Adapt the content of the initiatives

Identify the important conditions that improve learning environments within those specific contexts and in line with the possibilities.

Be mindful of the context

It is important to realize there is no 'one size fits all' initiative or 'silver bullet'. It's all about keeping in mind different approaches related to context.

Make sure there is coherence

Coherency between the different steps within initiatives are important to ensure sustainable impact.



Color brave approach

Responding to the diversity of the target group. Intentional and purposeful interventions for specific target groups. (Acknowledging structural challenges due to differences in ethnicity, identity and access to power.)



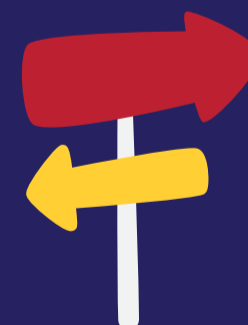
Holistic approach

Being mindful of the entire environment learning takes place. School, study, and private. (Also think about support in the private and family context.)



Intersectional approach

Take into account different overlapping challenges, in-group differences. (Highlight the importance of customized support.)



Pathway approach

There are multiple routes and pathways possible to ensure and enhance success within education. (Developing equitable and realistic pathways between and within educational systems and institutions.)